

Tel.: +598 2401 0444 | +1 305 328 3889 | +1 305 424 1494

www.cartrackgps.com | info@cartrackgps.com



SmartTRACKER MOTO

SmartTRACKER MOTO

SmartTRACKER MOTO

It is a compact device, sealed, waterproof that integrates GPS, GPRS and SMS, in a perfect design for motorcycles or light vehicles. Internal datalogger included, it allows remote hearing, and it has a movement sensor included, as well as battery and antennas included inside the device.

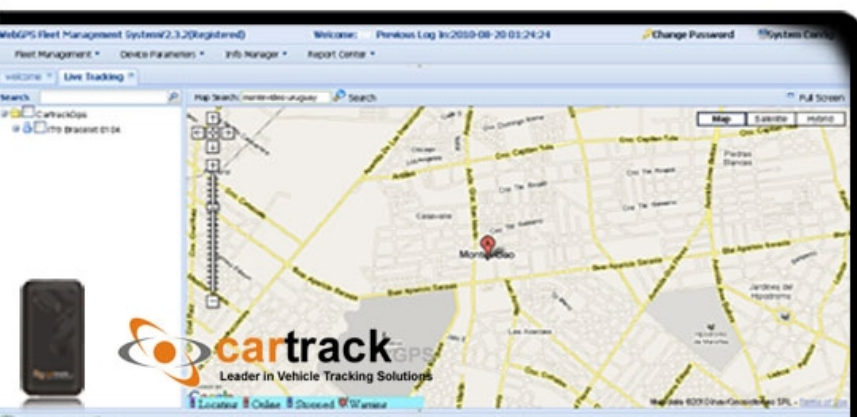
Virtually no installation required, only power as it has all the necessary for its proper performance, and it is advisable to connect the engine block from the motorcycle and ignition key sensor. We offer internet optional tracking and location, with free technical support and 2 years warranty against factory failure. Training option is available with this device.

Featured Details

Datalog 5000 Points. Geofence: NO. Remote hearing. Waterproof, Compact, Movement Sensor, Ignition detection, Anti-theft sensor (non-contact vibration), Power failure event, Ignition block, Panic Button.

WEB TRACKING Real Time Solution

**Monitoring and Vehicle Recovery
Lights and low cost**



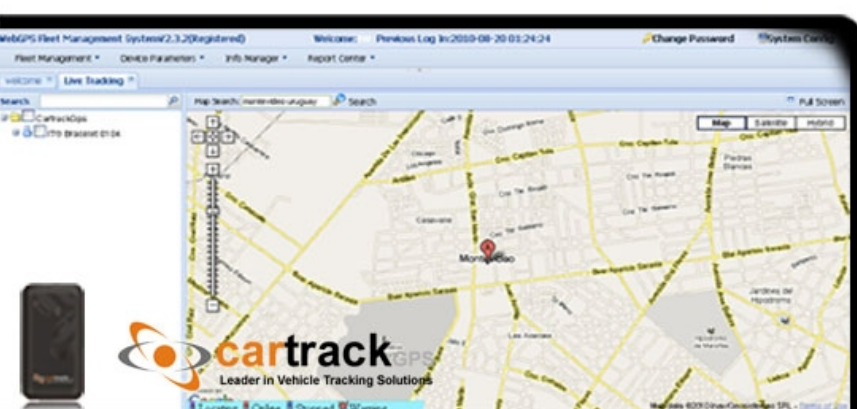
FUNCTIONALITIES

- It supports GPRS communication (data) and SMS (text messages) simultaneously.
- Allows direct tracking without required a server when it use SMS, and then an internet connection to see Google Maps.
- It automatic report according time or through command (on demand).
- It automatically turn itself off to not consume motorcycle or light vehicle battery. This allows to increase its performance in cases on which vehicle is stopped and with the ignition off.
- It storage last valid position and it reports it later, perfect for cases on which the device is on tunnels, parking spaces, etc., It is also suitable in cases of theft or kidnapping where the vehicle was hidden.
- Allows to connect a button to send Panic events.
- Power saving mode that allows to increase battery life.
- Remote configuration – remotely from a web page.
- Allows to block the engine remotely.
- Device Sabotage attempt alarm.
- Anti-theft system, that detects if vehicle is in movement when this one has the ignition off, and in this case it alerts the central about the situation.
- Waterproof device, designed to work in hostile environments
- Vibration or impact Sensor: included inside the device.
- Remote engine or fuel block by addint a relay.

TECHNICAL DETAILS

- GSM/GPRS Module Class 12, 850/900/1800/1900 Mhz, with internal antenna.
- GPS Module: SiRF III 20 high sensitivity channels with internal antenna.
- Tracking Rate: 1 Hz.
- GPRS and SMS communication modes.
- Protocole: NMEA-018 compatible
- Accuracy: 1-5 meters.
- Start GPS Location: cold start 35 seg., warm start: 1 seg.
- Charge Voltage: 5-36 VDC
- Li-Ion Battery: 500mAh (24 hour in power saving)
- Design: compact and waterproof
- High Sensitivity GPS antenna, quadband GSM antenna, Li-Ion battery, sim card holder, vibration sensor and external serial port connection included.
- Dimensions: 51mmx97mmx15mm
- Weight: 80 grams

WEB TRACKING



OUR PROFILE

We are a company pioneer in GPS system integration and software development for vehicle location worldwide. We have a wide tracking solution range, from 1996, year on which we started manufacturing national level (Uruguay), all kinds of GPS devices for tracking through AMPS and CDPD cellular technology, that was the ones that led the market in that time.

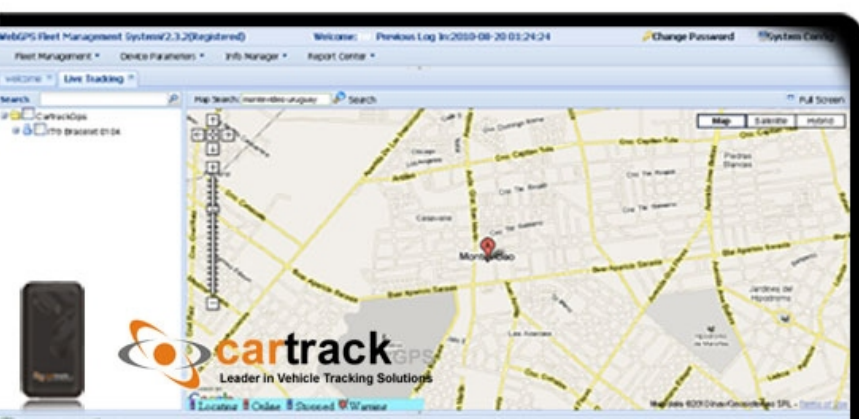
We export tracking solutions to 100 countries, and finally to get the costs lower, we manufacture our own equipments directly in Asia – to which we configure the firmware (the “brain”) totally designed in Uruguay.

This mean that the technology is created 100% by uruguayan technicians, meanwhile manufacturing is done with high qualities norms and more competitive prices - that is the advantage that has hiring the offshore components assembly, as well as to minimize errors and factory failure to 1 thousand rate.

We offer our high qualified and multidisciplinary staff, who are the ones that are in charge of sales and setting up – as we think that those who establish first contact with the client and advice as well, must deepen their relationship and responsibility to client always. This way lasting relationships are established, on which fast response to clients are guaranteed on matters to failure or incompatibility or to possible new accessories integration and adaptation, as well as to create a system according to clients need.

The fact of offering a turnkey solution makes us to improve our service, as we need always to overcome and continue marketing in order to continue within the market. We focus on the prodcut and we dont charge for technical support, this is why we think that we provide a perfectly profitable equation – which provide reliability and minimize monthly costs from our clients.

We are located in the central area from Montevdieo, Uruguay, and our worldwide approach has been mainly through internet; until the current date we have sold over than 50.000 units, existing a huge demand in the last years, in regards of the GPS Solutions markets.



SmartTRACKER MOTO

TO CONTACT US

CartrackGPS

- Tel.: +598 2401 0444
- Tel.: +1 305 328 3889
- Tel.: +1 305 424 1494

info@cartrackgps.com

www.cartrackgps.com